



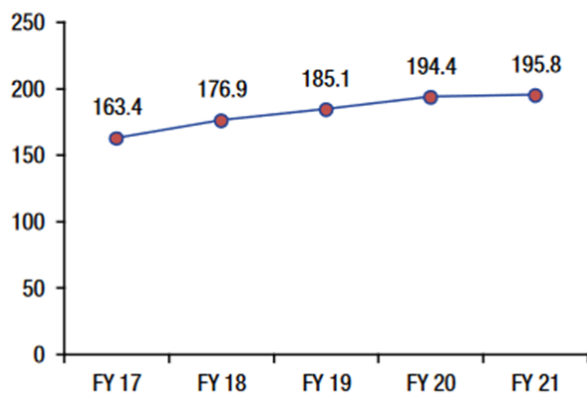
Santa Clara County Sheriff Candidate Forum 2022

Fact Sheet and Comparative Data

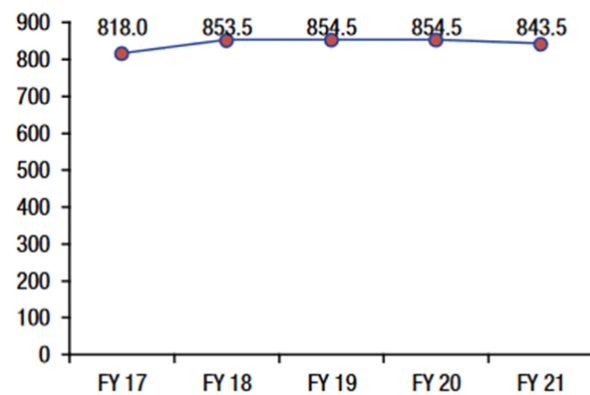
This fact sheet measures key aspects of the Santa Clara County Sheriff's Office, and offer comparisons among California Counties with similar populations. We encourage your feedback.

Use of Fund Balance or Discretionary Revenue Office of the Sheriff— Budget Unit 230

Budget Summary	FY 19-20 Adopted	FY 20-21 Base	FY 20-21 Recommended	Increase/ (Decrease)	Percent Change
Total Net Appropriation	\$ 189,601,365	\$ 193,814,659	\$ 189,476,728	(124,637)	-0.1%
Revenue	\$ 83,848,317	\$ 71,742,900	\$ 72,417,139	(11,431,178)	-13.6%
Net Cost	\$ 105,753,048	\$ 122,071,759	\$ 117,059,589	11,306,541	10.7%



Gross Appropriation Trend



Staffing Trend

Comparative Data

Comparative Data is **not** exactly apples-to-apples. There are significant differences in responsibilities among the Sheriffs and base years for data are different, so we encourage you to temper your judgements.

Force Structure Comparisons – Counties ±15% of Santa Clara Population								
County	2020 Population (x100K)	2016 Sworn ³ Officers	2020 FTE ²	2020 Sheriff Budget	Area Patrolled (Miles ²)	Cost per Sworn Officer	Sworn Officers per Mile ²	2016 Sworn Officer/100,000 Population (2020)
Santa Clara	19.36	456	854.5	\$194,400,000	1,290	\$426K/yr	0.35	23.6
Alameda	16.82	989	1,633.67	\$480,065,519	739	\$485K/yr	1.3	58.8
Sacramento	15.85	1,246	2,170.0	\$592,131,809	965	\$475K/yr	1.29	78.6
San Bernadino	21.81	2,007	1,874.0	\$248,966,123	3,810 ¹	\$124K/yr	0.53	92.0

Note 1 – 81% of all land in San Bernadino County (20,057 Mile²) is controlled by the Federal Government

Note 2 – FTE is an acronym for Full-Time Equivalent or personnel of all categories budgeted for the year

Note 3 - A "Sworn" officer takes an oath to support the Constitution of the United States, their state, and the laws of their agency's jurisdiction and is typically armed

Observations – Relative to other counties with similar populations the Santa Clara County Sheriff's Office

- Has a low number of Sworn Officers (armed) for the county population @ 23.6/100K Population
- Costs per Sworn Officer are comparable (San Bernadino is an outlier)

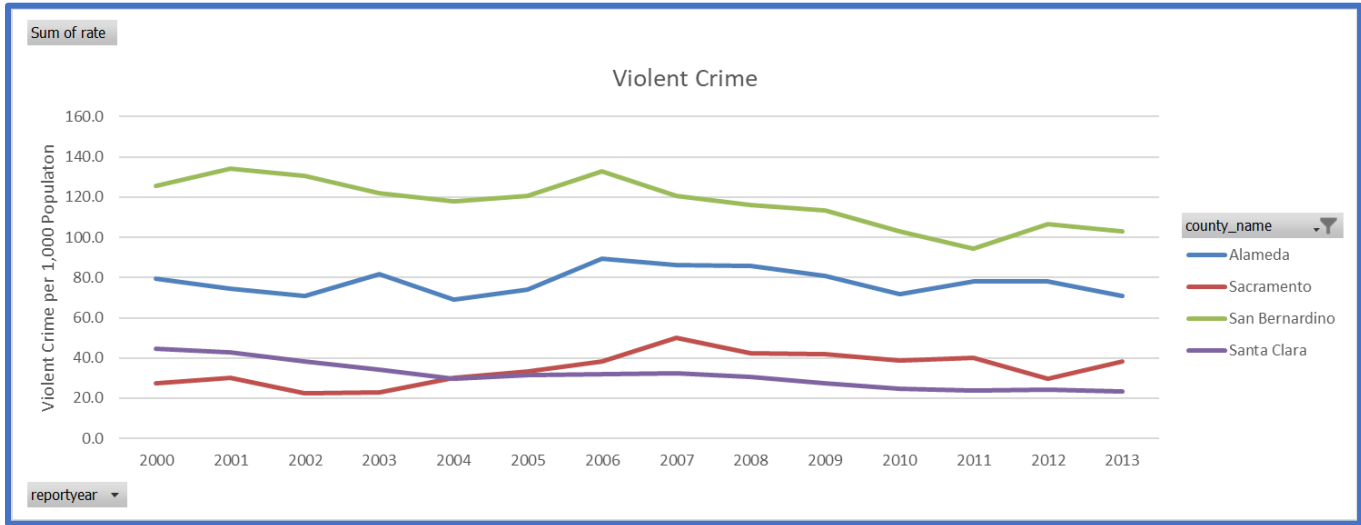


Santa Clara County Sheriff Candidate Forum 2022

Fact Sheet and Comparative Data

This fact sheet measures key aspects of the Santa Clara County Sheriff's Office, and offer comparisons among California Counties with similar populations. We encourage your feedback.

Violent Crime Rate 2000 to 2013 (CAGOV Data Portal)



Arrest for Violent Crime 1980 to 2020

